



## Community Support



August has given us some very hot weather. I hope you are enjoying this cooler spell! Many shops cafes and restaurants are now open and has given us a great opportunity to get out and about. However there are still some that are continuing to stay in or self isolate. Local support is still available for those who need it.



Southampton City Council has a Covid-19 resident's helpline 02380 834800 which is open Monday-Friday, 8:30 to 5pm or online [southampton.gov.uk/Coronavirus/-/inneed-help.asp](https://southampton.gov.uk/Coronavirus/-/inneed-help.asp) There is also [SO-linked.org.uk](https://SO-linked.org.uk) -community navigation service, which has organisations available to give advice and support.

I am also available for support via telephone or email. If you would like to share any of your photos of lock down activities it would be lovely to see them. Email on [beccy.gange.swhg@gmail.com](mailto:beccy.gange.swhg@gmail.com) or Tel: 07853553499



### Things to do...

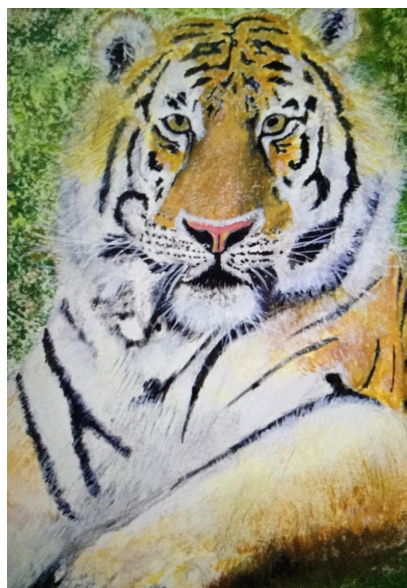
### Libraries

**Services are now moving into the next stage of reopening including: Returns, Book browsing, pre- booked computer access, Photocopying, Select & Collect services. Customers can reserve items online or via telephone: 02380833007 Lines are open Monday to Friday 10am-1pm or 2pm-5pm. Items will be prepared for you to collect from the Library.**

**Natural History Museum do a virtual tour online.take a look at the virtual self-guided tour. Visit [nhm.ac.uk](https://nhm.ac.uk)**



OARA our local residents association have busy during lockdown, a notice board with residents contributions have been posted on the notice board by the planters at AlmaRoad / Gordon Avenue. They also now have a Facebook page with lots of interesting information, including the History of the Area. [outeravenueresidents.co.uk](https://outeravenueresidents.co.uk) for more information.



Big Cat Paintings by Liza McCarthy